

PROJECT OF THE MONTH | Maggenberg residential care home [CH]

9
17



LUMEO®-R
THE ORIGINAL
with DUROSATIN®
MORE OPTIONS!
durlum.com/lumeo



CEILING
LIGHTING
AMBIENCE

durlum.com

PHOTO: © Thomas Krauss [DE]

PROJECT OF THE MONTH | Maggenberg residential care home [CH]

9
17



PROJECT Maggenberg residential care home [CH]

COMPLETION August 2017

ARCHITECT von allmen architekten [CH]

PRODUCTS LUMEO®-R LED recessed installed and surface-mounted luminaires in Ø sizes of 500 mm, 600 mm and 900 mm; powder-coated in RAL 9010; light colour 3000 K DALI dimmable; some luminaires with optional colour control [total of 176 units]

Metal ceiling panels designed in various height-adjustable and movable systems; 0.7 mm steel; in RAL 9010, matt powder-coated [approx. 700 m²]

Exclusive location, peace and comfort- This is what the Maggenberg residential care home has to offer, located in Tafers, a village near Berne. Standing on a hill of the same name, it has a magnificent outlook across the Fribourg Alps. The care home was extended this year with a new-build station for people suffering from dementia. Here it is now possible to respond appropriately to the needs and requirements of these patients. The ceiling elements and illuminated surfaces from durlum blend skilfully into this functional yet also welcoming building.

A striking design feature runs like a consistent thread throughout the architecture of this two-storey building. The large surface areas of the round LUMEO®-R luminaires. In the corridors, these illuminated surfaces are designed as recessed installed and surface-mounted variants with diameters of 500 mm. By way of design contrast, more visually dominant surface-mounted luminaires with diameters of 600 and 900 mm are installed in the cafeteria and in the treatment and rest rooms. To enhance the impact of the rest rooms, LUMEO®-R luminaires are produced with remotely controlled colour control. With three different programming levels, this enables lighting moods to be created in soft transitions that make patient therapy even more pleasant and effective.

Metal ceiling panels in a neutral white powder coating form the background for many of the LUMEO®-R lighting surfaces. With the height-adjustable and movable function, it is never a problem to alter the location of these individual elements. The ceiling lighting combination of extensive illuminated surfaces and functional metal ceiling panels creates an ensemble that creates a pleasant atmosphere in the dementia station.

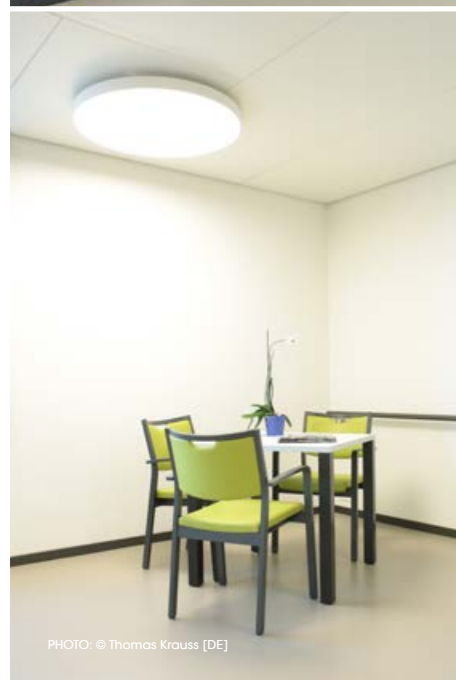


PHOTO: © Thomas Krauss [DE]